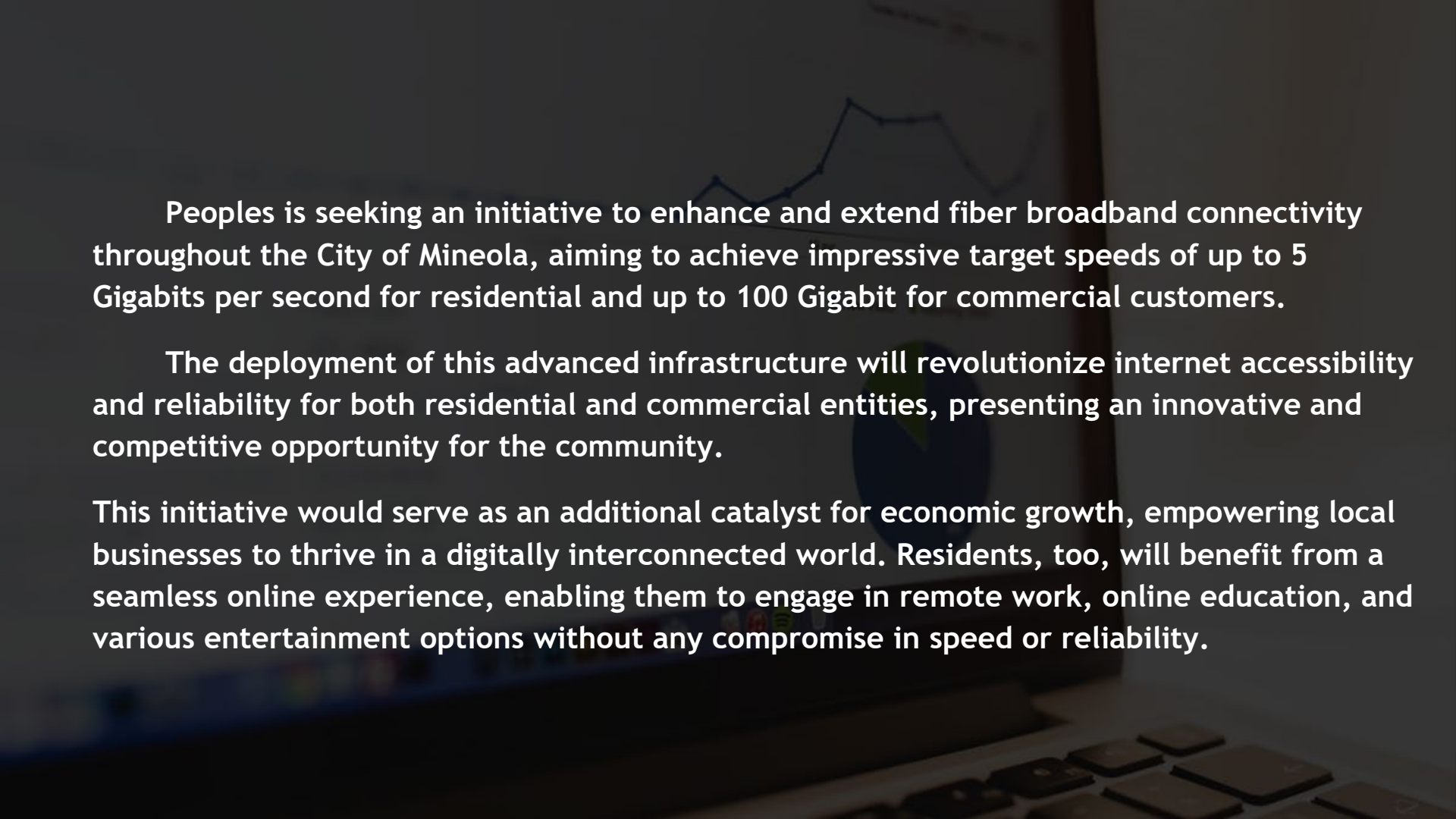




# City of Mineola Broadband Expansion

Jason Slagle  
Chief Business Development Officer

The background of the image is a dark, dimly lit laptop screen. On the screen, there is a faint line graph with a blue line showing an upward trend, and a pie chart with green and blue segments. The text is overlaid on this background in a white, sans-serif font.

**Peoples is seeking an initiative to enhance and extend fiber broadband connectivity throughout the City of Mineola, aiming to achieve impressive target speeds of up to 5 Gigabits per second for residential and up to 100 Gigabit for commercial customers.**

**The deployment of this advanced infrastructure will revolutionize internet accessibility and reliability for both residential and commercial entities, presenting an innovative and competitive opportunity for the community.**

**This initiative would serve as an additional catalyst for economic growth, empowering local businesses to thrive in a digitally interconnected world. Residents, too, will benefit from a seamless online experience, enabling them to engage in remote work, online education, and various entertainment options without any compromise in speed or reliability.**

# Why (Multi)Gigabit-City



Attracts businesses - high speed and reliable connections

Allows remote work , online learning, and other service like Tele-health

Fiber is a Reliable Service 99.995%

Internet Cost decrease - More Competition

Higher Bandwidth - 400G backhaul



1.5K/12K

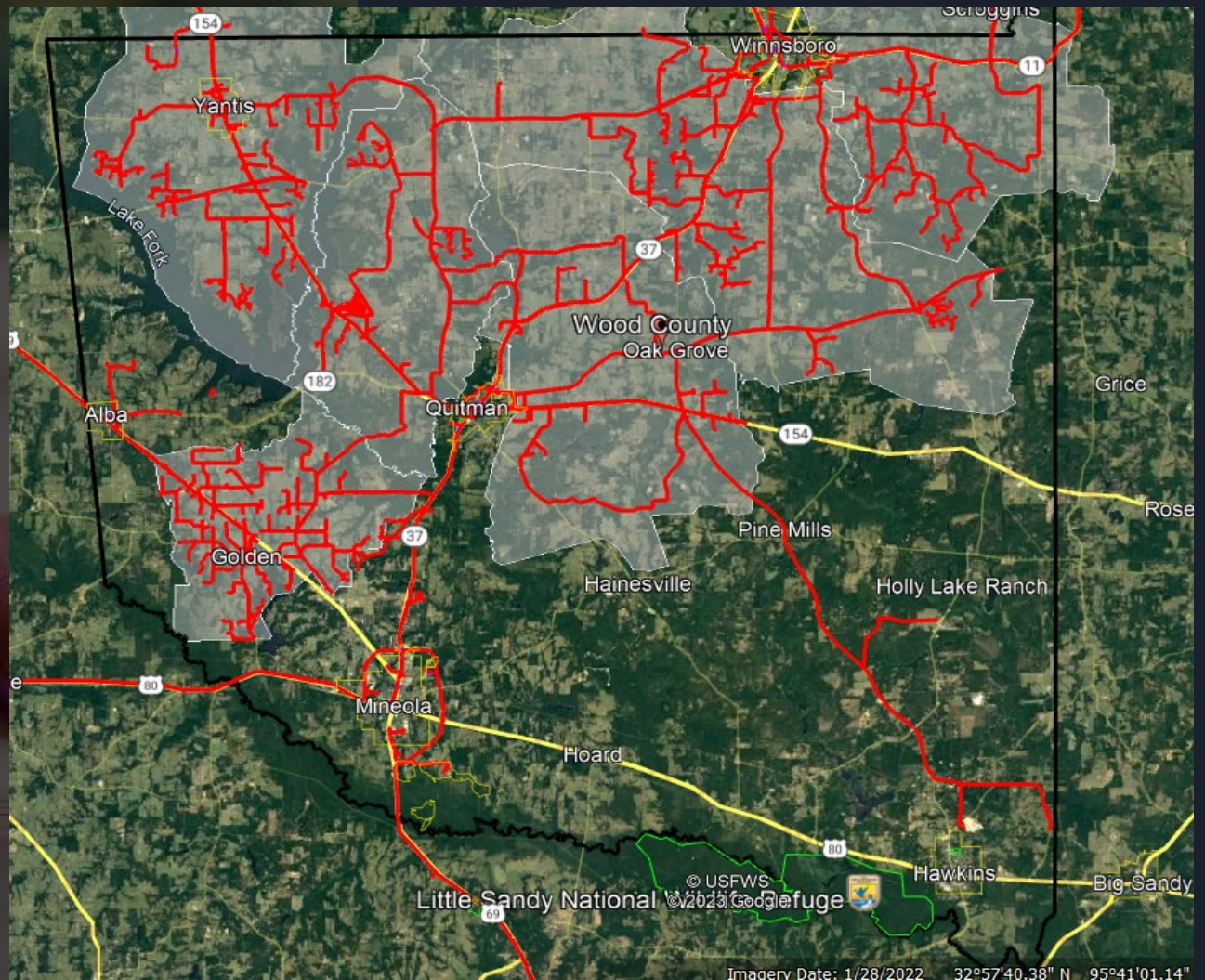
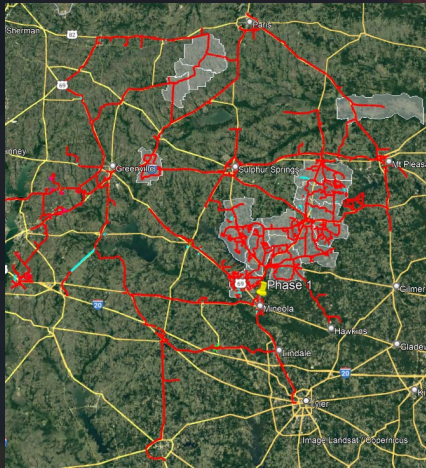
Increased home values

Increases property Tax paid to City and Schools by Providers

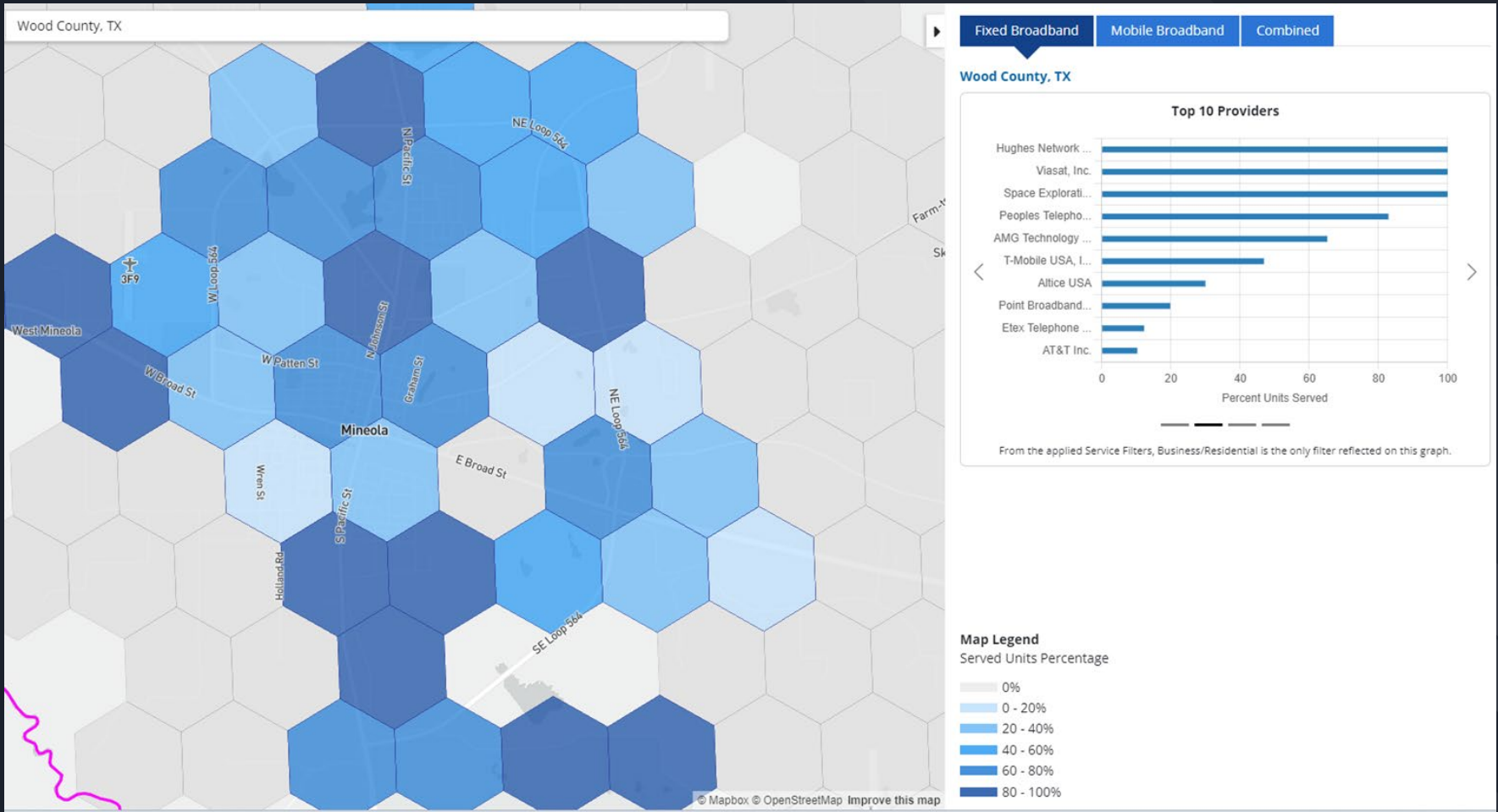
Peoples -

# Peoples ILEC Boundary

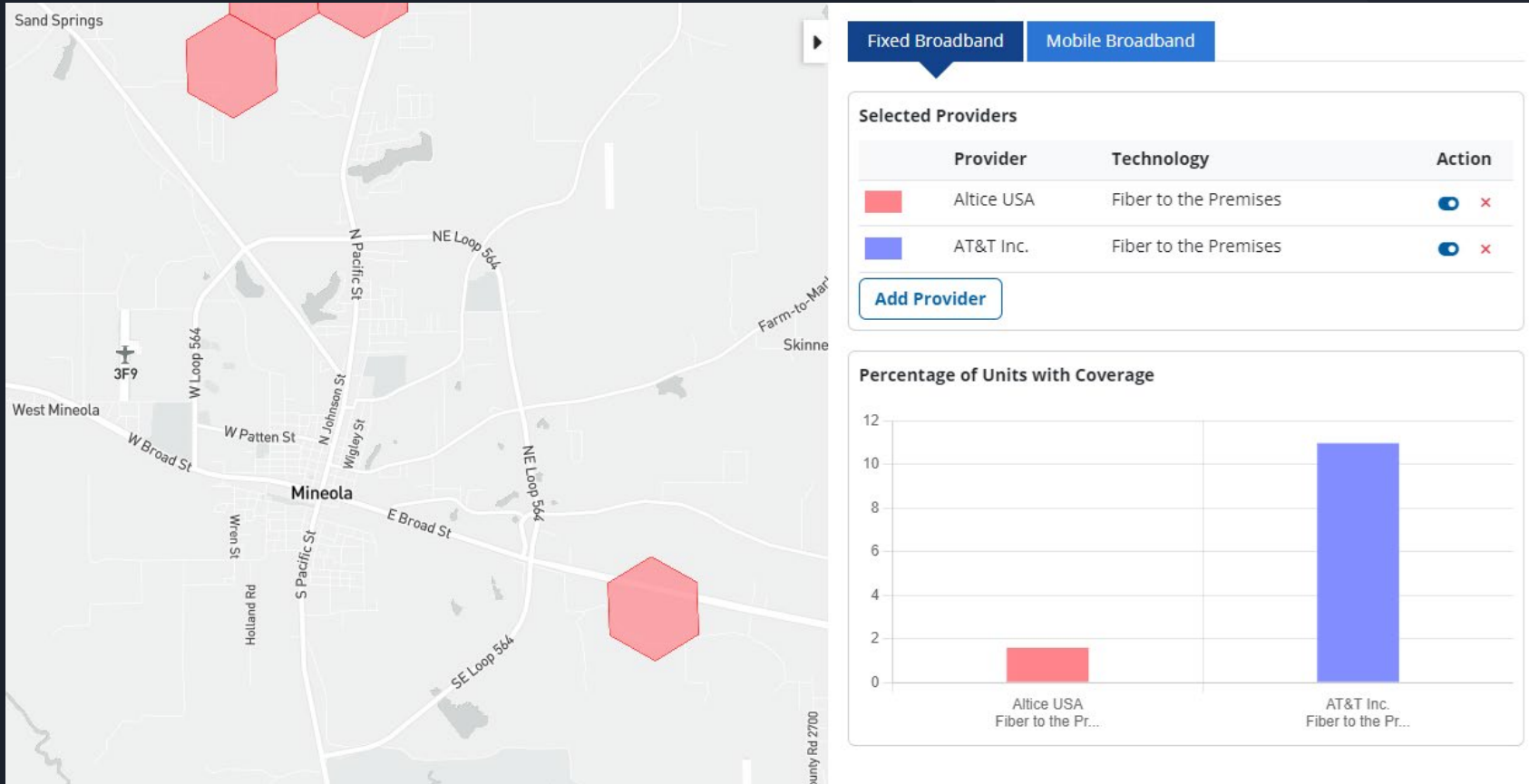
# Wood County



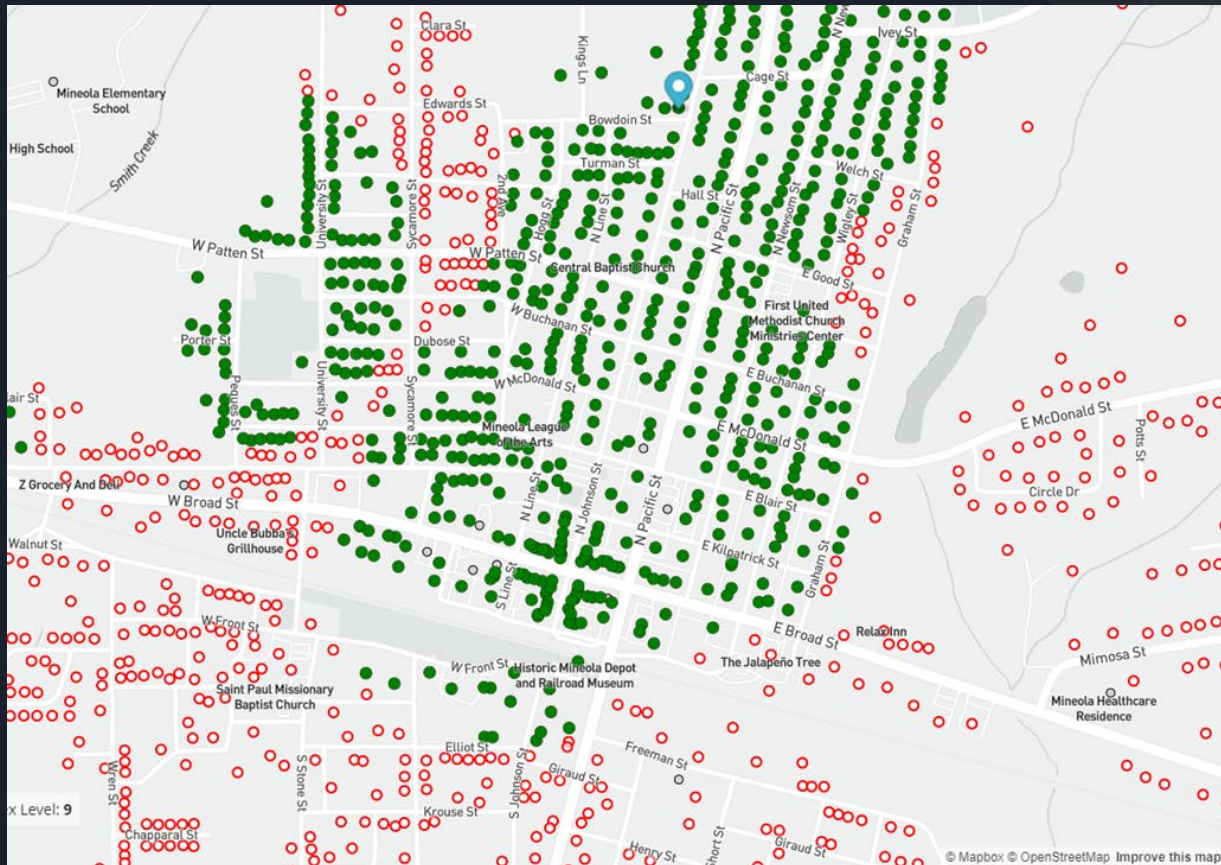
# FCC Broadband Data



# Who provides Fiber in Mineola



# Provider Data



## Selected Location

901 N JOHNSON ST  
MINEOLA, TX 75773

Status: Served | Residential | Unit Count: 1

## Broadband Availability

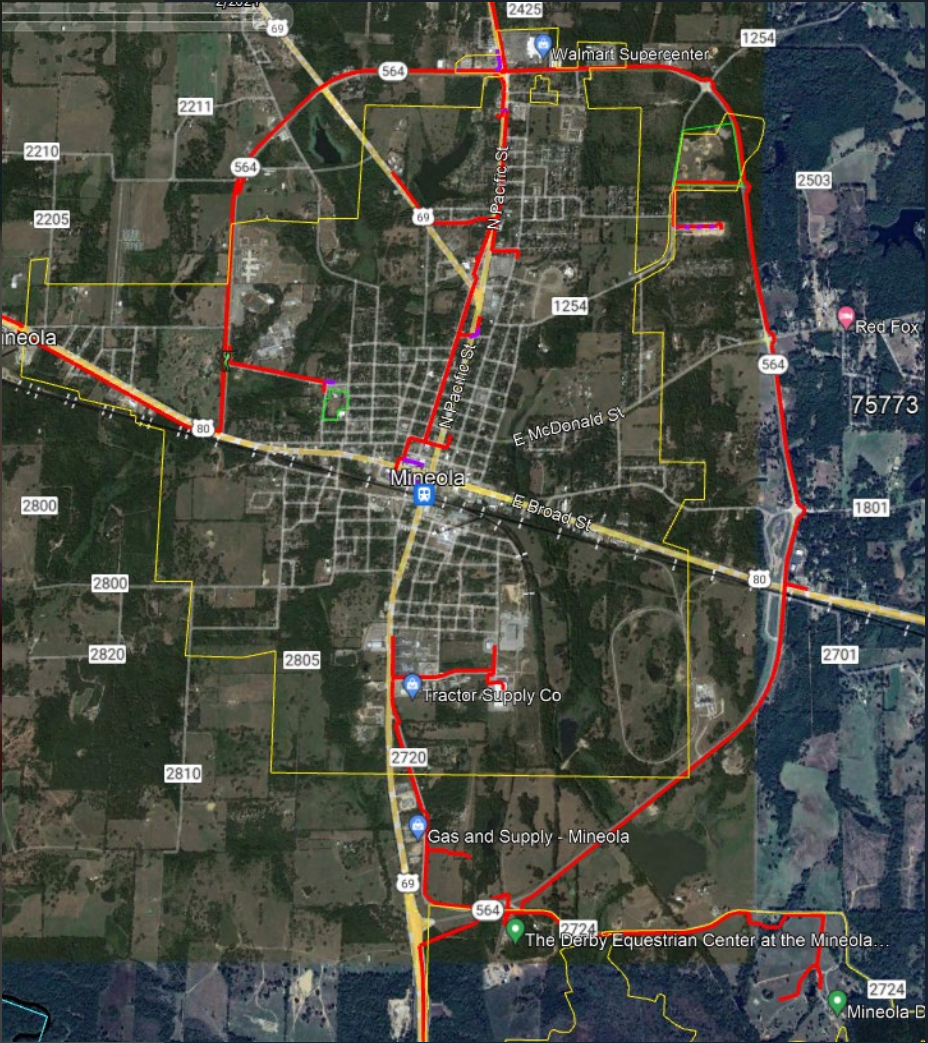
Provider	Technology	Down (Mbps)	Up (Mbps)
<a href="#">Altice USA</a>	Cable	940	35
<a href="#">AT&amp;T Inc.</a>	Copper	10	1
<a href="#">Hughes Network Systems, LLC</a>	GSO Satellite	25	3
<a href="#">Peoples Telephone Cooperative</a>	Fiber to the Premises	1000	1000
<a href="#">Space Exploration Technologies Corp.</a>	NGSO Satellite	50	10
<a href="#">T-Mobile USA, Inc.</a>	Licensed Fixed Wireless	0.2	0.2
<a href="#">Viasat, Inc.</a>	GSO Satellite	30	3
<b>Business-only Service</b>			
<a href="#">Viasat, Inc.</a>	GSO Satellite	35	4

## Map Legend

- Coverage available
- Coverage not available
- Not a mass market location

Peoples  
Fiber  
(Current)

Wood  
County

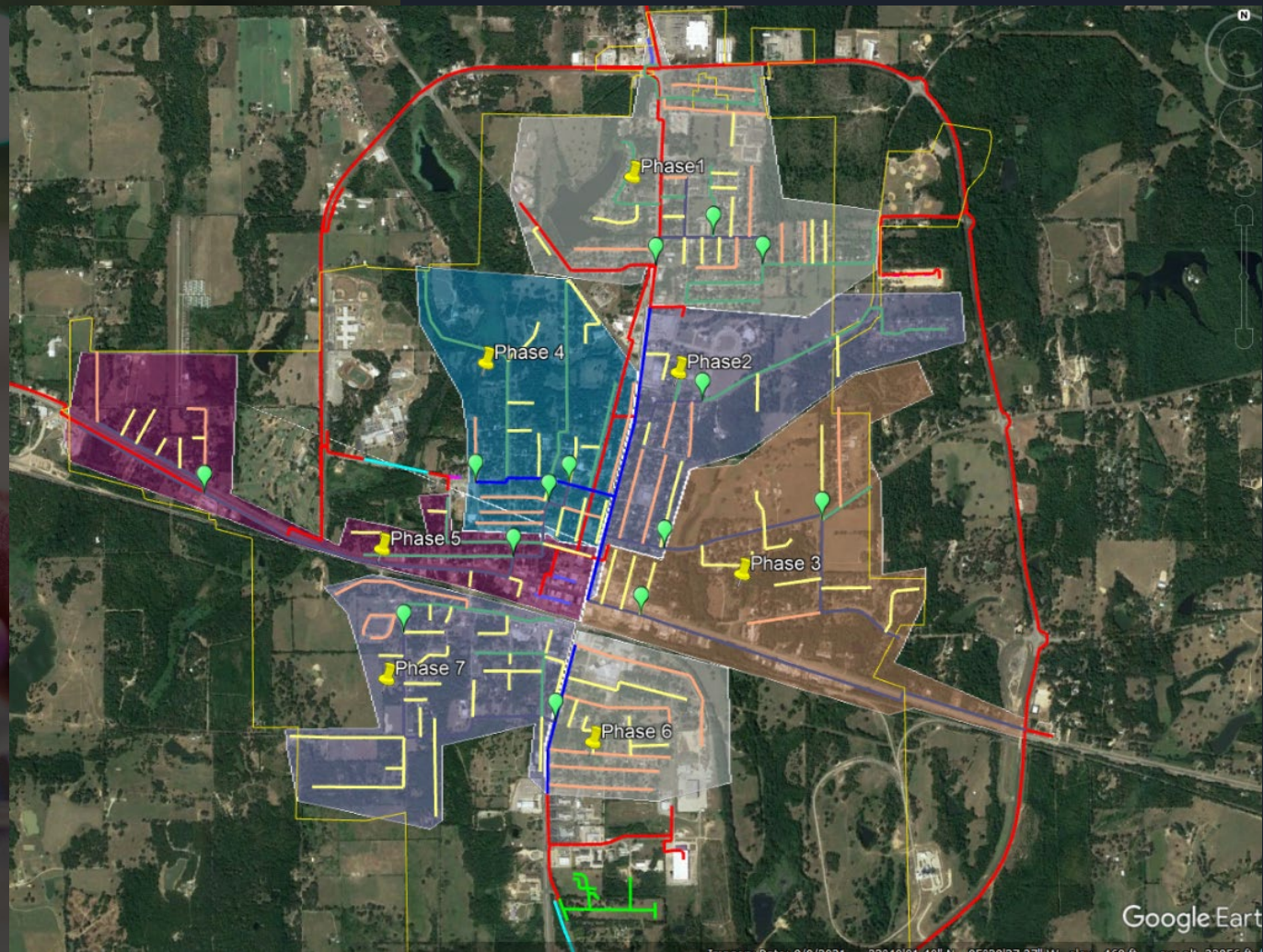




Peoples

Mineola  
7 Phase  
Approach

Wood  
County





# Financials

## City of Mineola FTTH Project 1-2024

Area	Fiber Main Line Footage	Cost	Passings
Phase 1	32,521	\$552,857.00	410
Phase 2	23,148	\$393,516.00	259
Phase 3	28,227	\$479,859.00	243
Phase 4	28,196	\$479,332.00	352
Phase 5	24,636	\$418,812.00	310
Phase 6	18,792	\$319,464.00	161
Phase 7	30,277	\$514,709.00	190
<b>Total</b>	<b>185,797</b>	<b>\$3,158,549.00</b>	<b>1925</b>
<b>Main Line Construction Cost Estimate</b>		<b>\$3,158,549.00</b>	
<b>Drop Cost Estimate @ 30% take rate</b>		<b>\$ 693,000.00</b>	
<b>Total Cost Estimate @ 30% take rate</b>		<b>\$3,851,549.00</b>	
<b>External Funding Target</b>		<b>\$ 947,564.70</b>	
<b>Funding Target Years</b>		<b>1-4 years</b>	